

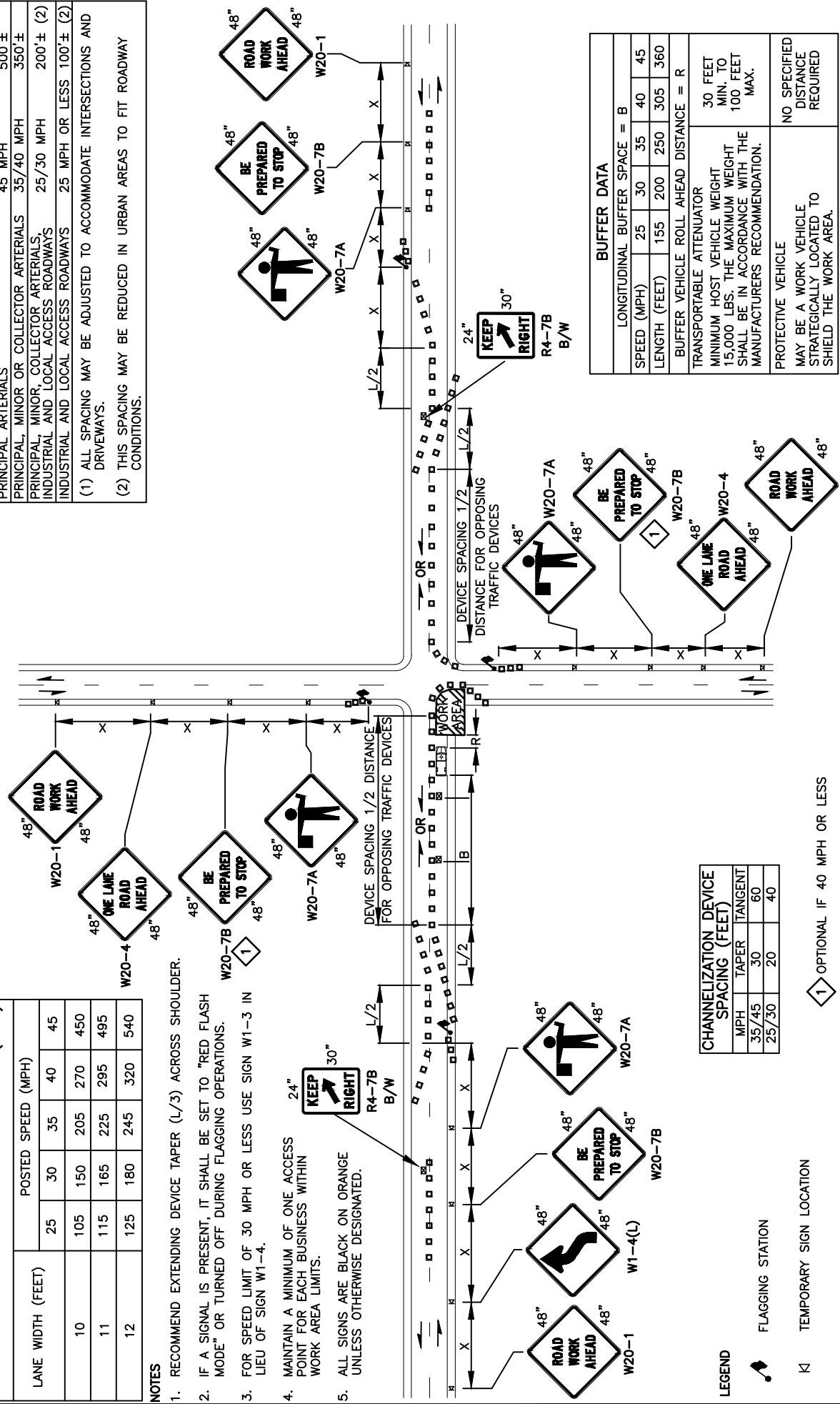
| MINIMUM LANE CLOSURE TAPER LENGTH = L (FEET) | | |
|--|--------------------|-----|
| LANE WIDTH (FEET) | POSTED SPEED (MPH) | |
| | | 25 |
| 10 | 105 | 150 |
| 11 | 115 | 165 |
| 12 | 125 | 180 |
| | 225 | 295 |
| | 245 | 320 |
| | 540 | |

| SIGN SPACING = X (1) | | |
|---|----------------|-----------|
| PRINCIPAL ARTERIALS | 45 MPH | 500'± |
| PRINCIPAL, MINOR OR COLLECTOR ARTERIALS | 35/40 MPH | 350'± |
| PRINCIPAL, MINOR, COLLECTOR ARTERIALS, INDUSTRIAL AND LOCAL ACCESS ROADWAYS | 25/30 MPH | 200'± (2) |
| INDUSTRIAL AND LOCAL ACCESS ROADWAYS | 25 MPH OR LESS | 100'± (2) |

(1) ALL SPACING MAY BE ADJUSTED TO ACCOMMODATE INTERSECTIONS AND DRIVEWAYS.
 (2) THIS SPACING MAY BE REDUCED IN URBAN AREAS TO FIT ROADWAY CONDITIONS.

NOTES

- RECOMMEND EXTENDING DEVICE TAPER (L/3) ACROSS SHOULDER.
- IF A SIGNAL IS PRESENT, IT SHALL BE SET TO "RED FLASH MODE" OR TURNED OFF DURING FLAGGING OPERATIONS.
- FOR SPEED LIMIT OF 30 MPH OR LESS USE SIGN W1-3 IN LIEU OF SIGN W1-4.
- MAINTAIN A MINIMUM OF ONE ACCESS POINT FOR EACH BUSINESS WITHIN WORK AREA LIMITS.
- ALL SIGNS ARE BLACK ON ORANGE UNLESS OTHERWISE DESIGNATED.



| CHANNELIZATION DEVICE SPACING (FEET) | | |
|--------------------------------------|-------|---------|
| MPH | TAPER | TANGENT |
| 35/45 | 30 | 60 |
| 25/30 | 20 | 40 |

1 OPTIONAL IF 40 MPH OR LESS

| BUFFER DATA | | | | | |
|--|--------------------------------|-----|-----|-----|-----|
| LONGITUDINAL BUFFER SPACE = B | | | | | |
| SPEED (MPH) | 25 | 30 | 35 | 40 | 45 |
| LENGTH (FEET) | 155 | 200 | 250 | 305 | 360 |
| BUFFER VEHICLE ROLL AHEAD DISTANCE = R | | | | | |
| TRANSPORTABLE ATTENUATOR | 30 FEET | | | | |
| MINIMUM HOST VEHICLE WEIGHT | MIN. TO | | | | |
| SHALL BE IN ACCORDANCE WITH THE MANUFACTURERS RECOMMENDATION. | 100 FEET | | | | |
| PROTECTIVE VEHICLE | NO SPECIFIED DISTANCE REQUIRED | | | | |
| MAY BE A WORK VEHICLE STRATEGICALLY LOCATED TO SHIELD THE WORK AREA. | | | | | |

**TRAFFIC CONTROL STANDARD PLAN
 INTERSECTION LANE CLOSURE - 2 LANE ROADWAYS**

CITY OF VANCOUVER
 DEPARTMENT OF PUBLIC WORKS
 TRANSPORTATION DIVISION



- TEMPORARY SIGN LOCATION
- CHANNELIZING DEVICES
- PROTECTIVE VEHICLE - RECOMMENDED
- TEMP. SIGN LOCATION (5' MOUNTING HEIGHT)

| | | | |
|----------|-------------|---------------|---------------|
| DRAWN BY | APPROVED BY | APPROVAL DATE | STD. PLAN NO. |
| CDC | | 3/17 | TC19 |
| REVISION | APPROVED BY | APPROVAL DATE | |
| 3 | | 3/24 | |