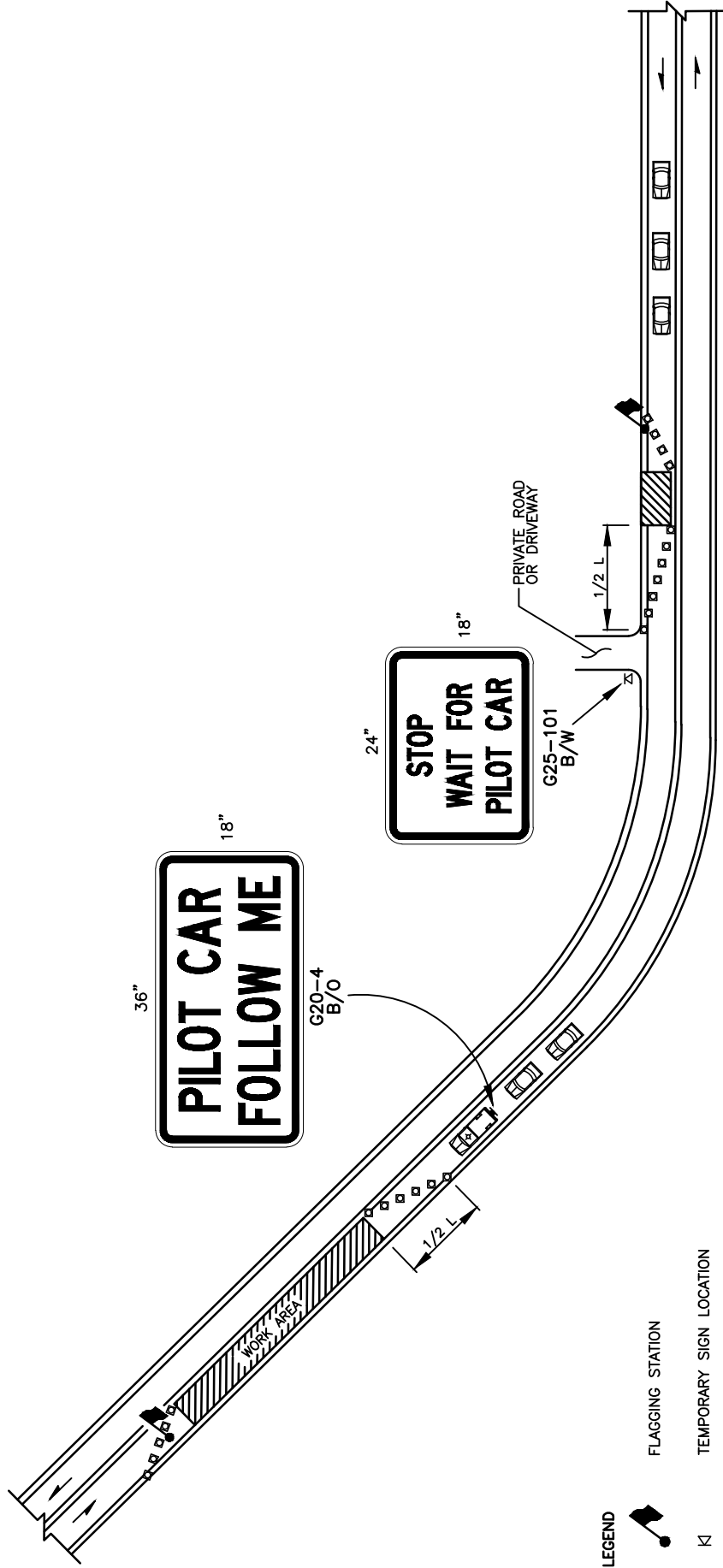


CHANNELIZATION DEVICE SPACING (FEET)			
MPH	TAPER	TANGENT	
35/45	30	60	
25/30	20	40	

LANE WIDTH (FEET)	MINIMUM TAPER LENGTH = L (FEET)			
	25	30	35	40
10	105	150	205	270
11	115	165	225	295
12	125	180	245	320

NOTES:

1. REFER TO SHEET TC1 FOR ADDITIONAL SIGNING AND FLAGGING DETAILS NOT SHOWN.
2. CHANNELIZING DEVICES ARE RECOMMENDED ALONG CENTERLINE TO SEPARATE TRAFFIC FROM WORK OPERATION. DEVICES ARE REQUIRED AT TAPERS TO SHIFT TRAFFIC MOVEMENT BETWEEN LANES AND TO PROTECT FLAGGING STATIONS.
3. SIGN G25-101 IS RECOMMENDED FOR NON-STOP SIGN CONTROLLED APPROACHES SUCH AS PRIVATE ROADS AND DRIVEWAYS. THIS SIGN IS NOT REQUIRED TO BE ALUMINUM SUBSTRATE AND CAN BE MADE OF ALTERNATIVE MATERIALS.



LEGEND

- FLAGGING STATION
- TEMPORARY SIGN LOCATION
- CHANNELIZING DEVICES
- PILOT VEHICLE
- MOTORIST VEHICLE



**TRAFFIC CONTROL STANDARD PLAN
PILOT CAR OPERATION**

CITY OF VANCOUVER
DEPARTMENT OF PUBLIC WORKS
TRANSPORTATION DIVISION

DRAWN BY	APPROVED BY	APPROVAL DATE	STD. PLAN NO.
CDC		3/16	
REVISION	APPROVED BY	APPROVAL DATE	
3		3/24	