

MINIMUM SHOULDER TAPER LENGTH = L/3 (FEET)	
SHOULDER WIDTH (FEET)	POSTED SPEED (MPH)
	25 30 35 40
8	40 40 60 90
10	40 60 90 90

USE A MINIMUM 3 DEVICES TAPER FOR SHOULDER LESS THEN 8'.

CHANNELIZATION DEVICE SPACING (FEET)		
MPH	TAPER	TANGENT
35/40	30	60
25/30	20	40

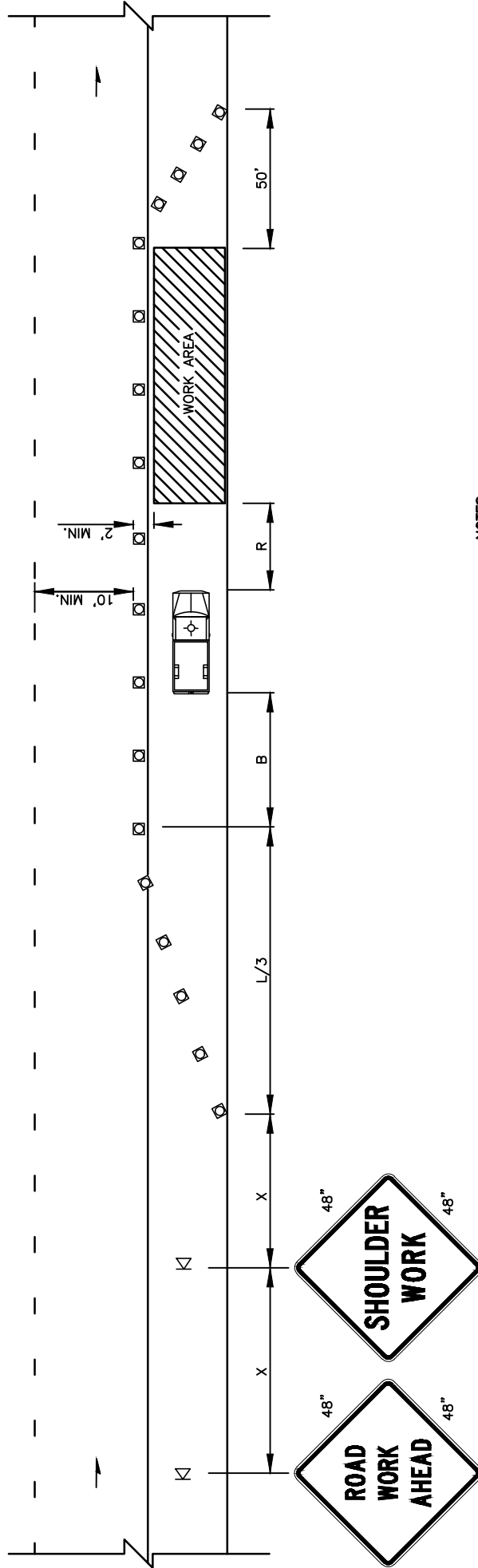
SIGN SPACING = X (1)		
PRINCIPAL, MINOR OR COLLECTOR ARTERIALS	35/40 MPH	350'±
PRINCIPAL, MINOR, COLLECTOR ARTERIALS, INDUSTRIAL AND LOCAL ACCESS ROADWAYS	25/30 MPH	200'± (2)
INDUSTRIAL AND LOCAL ACCESS ROADWAYS	25 MPH OR LESS DRIVEWAYS.	100'± (2)

(1) ALL SPACING MAY BE ADJUSTED TO ACCOMMODATE INTERSECTIONS AND DRIVEWAYS.  
 (2) THIS SPACING MAY BE REDUCED IN URBAN AREAS TO FIT ROADWAY CONDITIONS.

BUFFER DATA			
LONGITUDINAL BUFFER SPACE = B			
SPEED (MPH)	25	30	35 40
LENGTH (FEET)	155	200	250 305

BUFFER VEHICLE ROLL AHEAD DISTANCE = R

TRANSPORTABLE ATTENUATOR	MINIMUM HOST VEHICLE WEIGHT (LBS. IN ACCORDANCE WITH THE MANUFACTURERS RECOMMENDATION.)	30 FEET MIN. TO 100 FEET MAX.
PROTECTIVE VEHICLE	MAY BE A WORK VEHICLE STRATEGICALLY LOCATED TO SHIELD THE WORK AREA.	NO SPECIFIED DISTANCE REQUIRED



NOTES:

1. DEVICE SPACING FOR THE DOWNSTREAM TAPER SHALL BE 20' (FT).
2. ALL SIGNS ARE BLACK ON ORANGE.

W20-1 W21-5

LEGEND

- K TEMPORARY SIGN LOCATION
- CHANNELIZING DEVICES
- ⊕ PROTECTIVE VEHICLE



TRAFFIC CONTROL STANDARD PLAN  
 SHOULDER CLOSURE LOW SPEED (40 MPH OR LESS)

CITY OF VANCOUVER  
 DEPARTMENT OF PUBLIC WORKS  
 TRANSPORTATION DIVISION

DRAWN BY	APPROVED BY	APPROVAL DATE	STD. PLAN NO.
CDC	[Signature]	3/16	TC5
REVISION	3	3/24	