

MINIMUM SHOULDER TAPER LENGTH = L/3 (FEET)	
SHOULDER WIDTH (FEET)	POSTED SPEED (MPH)
8	25 30 35 40 45
10	- - - - -
	120 150

USE A MINIMUM 3 DEVICES TAPER FOR SHOULDER LESS THAN 8'.

SIGN SPACING = X (1)

PRINCIPAL ARTERIALS	45 MPH	500'±
---------------------	--------	-------

(1) ALL SPACING MAY BE ADJUSTED TO ACCOMMODATE INTERSECTIONS AND DRIVEWAYS.

CHANNELIZATION DEVICE SPACING (FEET)

MPH	TAPER	TANGENT
45	30	60

BUFFER DATA

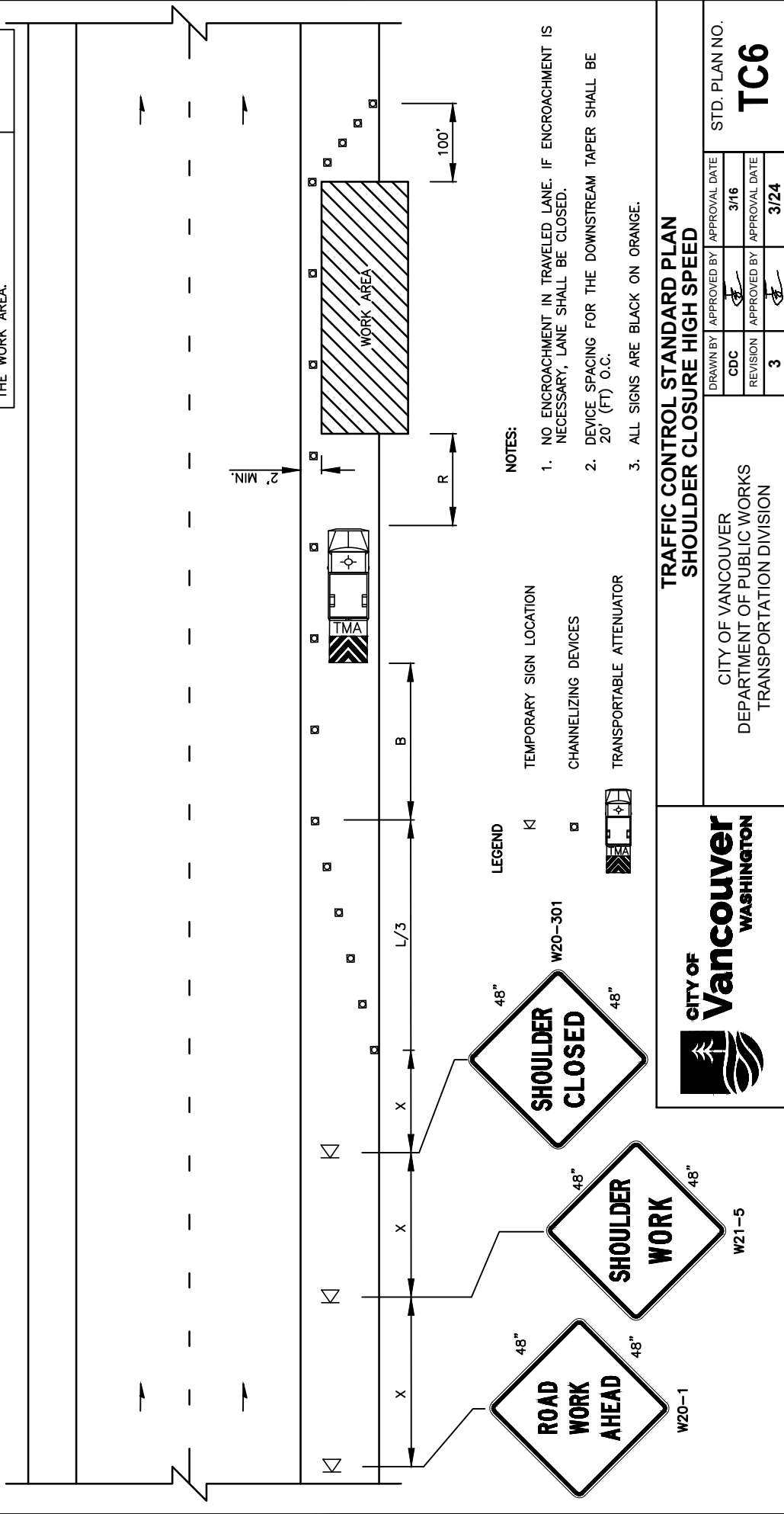
LONGITUDINAL BUFFER SPACE = B					
SPEED (MPH)	25	30	35	40	45
LENGTH (FEET)	-	-	-	-	360

BUFFER VEHICLE ROLL AHEAD DISTANCE = R

TRANSPORTABLE ATTENUATOR
MINIMUM HOST VEHICLE WEIGHT 15,000 LBS. THE MAXIMUM WEIGHT SHALL BE IN ACCORDANCE WITH THE MANUFACTURERS RECOMMENDATION.

PROTECTIVE VEHICLE
MAY BE A WORK VEHICLE STRATEGICALLY LOCATED TO SHIELD THE WORK AREA.

NO SPECIFIED DISTANCE REQUIRED



- NOTES:**
- NO ENCROACHMENT IN TRAVELED LANE. IF ENCROACHMENT IS NECESSARY, LANE SHALL BE CLOSED.
 - DEVICE SPACING FOR THE DOWNSTREAM TAPER SHALL BE 20' (FT) O.C.
 - ALL SIGNS ARE BLACK ON ORANGE.

LEGEND

- K TEMPORARY SIGN LOCATION
- CHANNELIZING DEVICES
- TRANSPORTABLE ATTENUATOR

**TRAFFIC CONTROL STANDARD PLAN
SHOULDER CLOSURE HIGH SPEED**

CITY OF **Vancouver** WASHINGTON

CITY OF VANCOUVER
DEPARTMENT OF PUBLIC WORKS
TRANSPORTATION DIVISION

DRAWN BY	APPROVED BY	APPROVAL DATE
CDC		3/16
REVISION	APPROVED BY	APPROVAL DATE
3		3/24

STD. PLAN NO. **TC6**