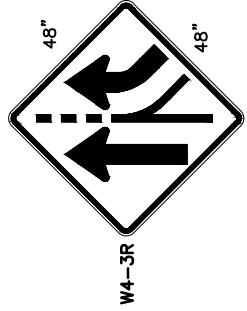


BUFFER DATA	
LONGITUDINAL BUFFER SPACE = B	
SPEED (MPH)	25 30 35 40 45
LENGTH (FEET)	155 200 250 305 360
BUFFER VEHICLE ROLL AHEAD DISTANCE = R	
TRANSPORTABLE ATTENUATOR	30 FEET
MINIMUM HOST VEHICLE WEIGHT	MIN. TO
15,000 LBS. THE MAXIMUM WEIGHT	100 FEET
SHALL BE IN ACCORDANCE WITH THE	MAX.
MANUFACTURERS RECOMMENDATION.	
PROTECTIVE VEHICLE	NO SPECIFIED
MAY BE A WORK VEHICLE	DISTANCE
STRATEGICALLY LOCATED TO	REQUIRED
SHIELD THE WORK AREA.	

CHANNELIZATION DEVICE SPACING (FEET)	
MPH	TANGENT
35/45	30 60
25/30	20 40

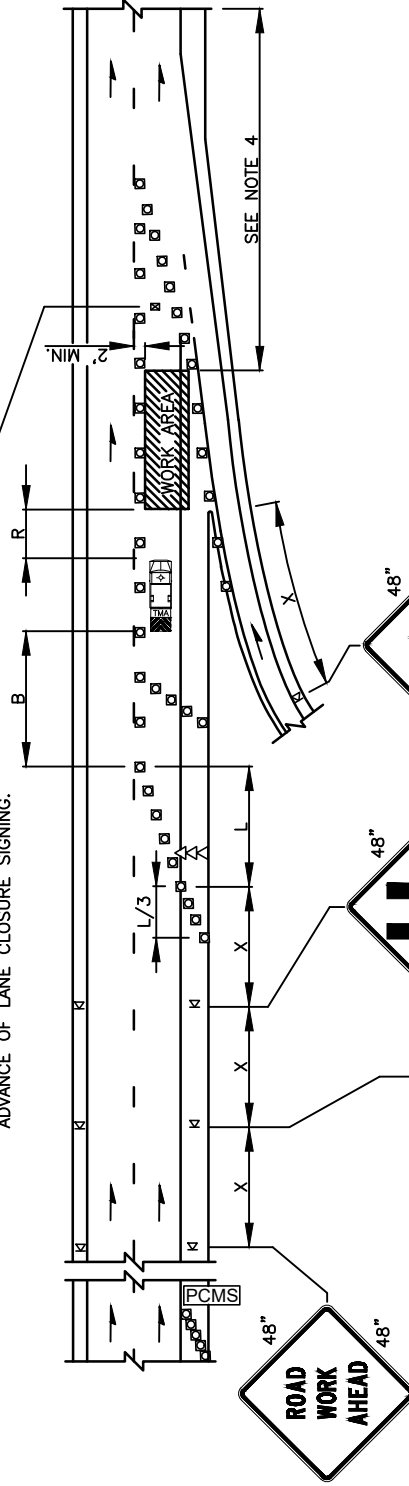
SIGN SPACING = X (1)	
PRINCIPAL ARTERIALS	45 MPH 500'±
PRINCIPAL, MINOR OR COLLECTOR ARTERIALS	35/40 MPH 350'±
PRINCIPAL, MINOR, COLLECTOR ARTERIALS, INDUSTRIAL AND LOCAL ACCESS ROADWAYS	25/30 MPH 200'± (2)
INDUSTRIAL AND LOCAL ACCESS ROADWAYS	25 MPH OR LESS 100'± (2)
(1) ALL SPACING MAY BE ADJUSTED TO ACCOMMODATE INTERSECTIONS AND DRIVEWAYS.	
(2) THIS SPACING MAY BE REDUCED IN URBAN AREAS TO FIT ROADWAY CONDITIONS.	

PCMS	
1	2
RIGHT LANE CLOSURE	1 MILE AHEAD
2.0 SEC	2.0 SEC



W4-3R

FIELD LOCATE 1 MILE ± IN ADVANCE OF LANE CLOSURE SIGNING.



- LEGEND
- K TEMPORARY SIGN LOCATION
 - CHANNELIZING DEVICES
 - ▷▷▷ SEQUENTIAL ARROW SIGN
 - ▶ TRANSPORTABLE ATTENUATOR

NOTES:

1. SEE SPECIAL PROVISIONS FOR CLOSURE HOUR RESTRICTIONS.
2. DEVICES SHALL NOT ENCRoACH INTO ADJACENT LANES.
3. USE TRANSVERSE DEVICES IN CLOSED LANES EVERY 1000'± (RECOMMENDED).
4. SEE SHEET TCXX FOR A SHORT TERM ON-RAMP CLOSURE WHEN THE WORK AREA LOCATION RESTRICTS RAMP ACCESS.
5. ALL SIGNS ARE BLACK ON ORANGE.

MINIMUM LANE CLOSURE TAPER LENGTH = L (FEET)		
LANE WIDTH (FEET)	POSTED SPEED (MPH)	
	25	30 35 40 45
10	105	150 205 270 450
11	115	165 225 295 495
12	125	180 245 320 540

MINIMUM SHOULDER TAPER LENGTH = L/3 (FEET)		
SHOULDER WIDTH (FEET)	POSTED SPEED (MPH)	
	25	30 35 40 45
8	40	60 90 120
10	40	60 90 150

USE A MINIMUM 3 DEVICES TAPER FOR SHOULDER LESS THEN 8'.

TRAFFIC CONTROL STANDARD PLAN
TEMPORARY ON-RAMP FOR MULTI-LANE ROADWAYS

CITY OF VANCOUVER
 DEPARTMENT OF PUBLIC WORKS
 TRANSPORTATION DIVISION



PORTABLE CHANGEABLE MESSAGE SIGN

TEMP. SIGN LOCATION (5' MOUNTING HEIGHT)

DRAWN BY	APPROVED BY	APPROVAL DATE	STD. PLAN NO.
CDC	[Signature]	3/16	TC8
REVISION	APPROVED BY	APPROVAL DATE	
3	[Signature]	3/24	