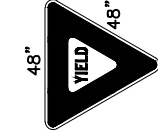


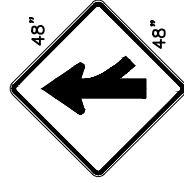
BUFFER DATA					
LONGITUDINAL BUFFER SPACE = B					
SPEED (MPH)	25	30	35	40	45
LENGTH (FEET)	155	200	250	305	360
BUFFER VEHICLE ROLL AHEAD DISTANCE = R					
TRANSPORTABLE ATTENUATOR	30 FEET				
MINIMUM HOST VEHICLE WEIGHT	15,000 LBS. THE MAXIMUM WEIGHT SHALL BE IN ACCORDANCE WITH THE MANUFACTURERS RECOMMENDATION.				
PROTECTIVE VEHICLE	NO SPECIFIED DISTANCE REQUIRED				
MAY BE A WORK VEHICLE STRATEGICALLY LOCATED TO SHIELD THE WORK AREA.					

SIGN SPACING = X (1)			
PRINCIPAL ARTERIALS	45 MPH	500' ±	
PRINCIPAL, MINOR OR COLLECTOR ARTERIALS	35/40 MPH	350' ±	
PRINCIPAL, MINOR, COLLECTOR ARTERIALS, INDUSTRIAL AND LOCAL ACCESS ROADWAYS	25/30 MPH	200' ± (2)	
INDUSTRIAL AND LOCAL ACCESS ROADWAYS	25 MPH OR LESS	100' ± (2)	
(1) ALL SPACING MAY BE ADJUSTED TO ACCOMMODATE INTERSECTIONS AND DRIVEWAYS.			
(2) THIS SPACING MAY BE REDUCED IN URBAN AREAS TO FIT ROADWAY CONDITIONS.			

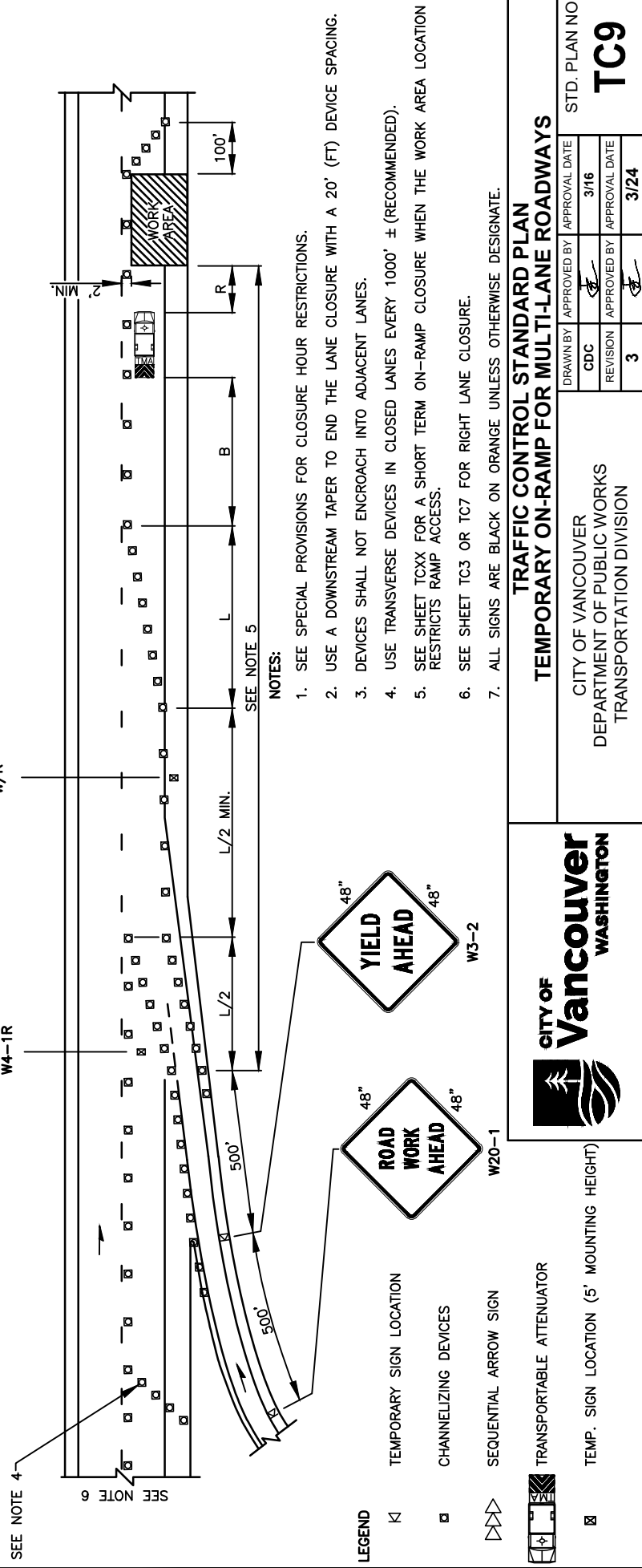
CHANNELIZATION DEVICE SPACING (FEET)			
MPH	TAPER	TANGENT	
35/45	30	60	
25/30	20	40	



R1-2  
W/R



W4-1R



- LEGEND**
- K1 TEMPORARY SIGN LOCATION
  - CHANNELIZING DEVICES
  - ▷▷▷ SEQUENTIAL ARROW SIGN
  - ▣ TRANSPORTABLE ATTENUATOR
  - ⊗ TEMP. SIGN LOCATION (5' MOUNTING HEIGHT)

**TRAFFIC CONTROL STANDARD PLAN**  
**TEMPORARY ON-RAMP FOR MULTI-LANE ROADWAYS**

CITY OF VANCOUVER  
 DEPARTMENT OF PUBLIC WORKS  
 TRANSPORTATION DIVISION

DRAWN BY: CDC  
 APPROVED BY: [Signature]  
 REVISION: 3  
 APPROVAL DATE: 3/16

APPROVED BY: [Signature]  
 APPROVAL DATE: 3/24

STD. PLAN NO. **TC9**

MINIMUM LANE CLOSURE TAPER LENGTH = L (FEET)					
LANE WIDTH (FEET)	POSTED SPEED (MPH)				
	25	30	35	40	45
10	105	150	205	270	450
11	115	165	225	295	495
12	125	180	245	320	540

MINIMUM SHOULDER TAPER LENGTH = L/3 (FEET)					
SHOULDER WIDTH (FEET)	POSTED SPEED (MPH)				
	25	30	35	40	45
8	40	40	60	90	120
10	40	40	60	90	150

USE A MINIMUM 3 DEVICES TAPER FOR SHOULDER LESS THAN 8'.

- NOTES:**
- SEE SPECIAL PROVISIONS FOR CLOSURE HOUR RESTRICTIONS.
  - USE A DOWNSTREAM TAPER TO END THE LANE CLOSURE WITH A 20' (FT) DEVICE SPACING.
  - DEVICES SHALL NOT ENCRoACH INTO ADJACENT LANES.
  - USE TRANSVERSE DEVICES IN CLOSED LANES EVERY 1000' ± (RECOMMENDED).
  - SEE SHEET TCXX FOR A SHORT TERM ON-RAMP CLOSURE WHEN THE WORK AREA LOCATION RESTRICTS RAMP ACCESS.
  - SEE SHEET TC3 OR TC7 FOR RIGHT LANE CLOSURE.
  - ALL SIGNS ARE BLACK ON ORANGE UNLESS OTHERWISE DESIGNATE.