



Stormwater Applicability

For all planning and building permits
Rev 7/25/24

Submit this page through ePlans with your permit application
For Stormwater specific questions contact surfacewater@cityofvancouver.us

Applicant Information

Name:	Date:
Phone Number:	Email:
Permit Number (If known):	

Site Information

Project Address:	Parcel Number:
Project Description:	

Project Impacts

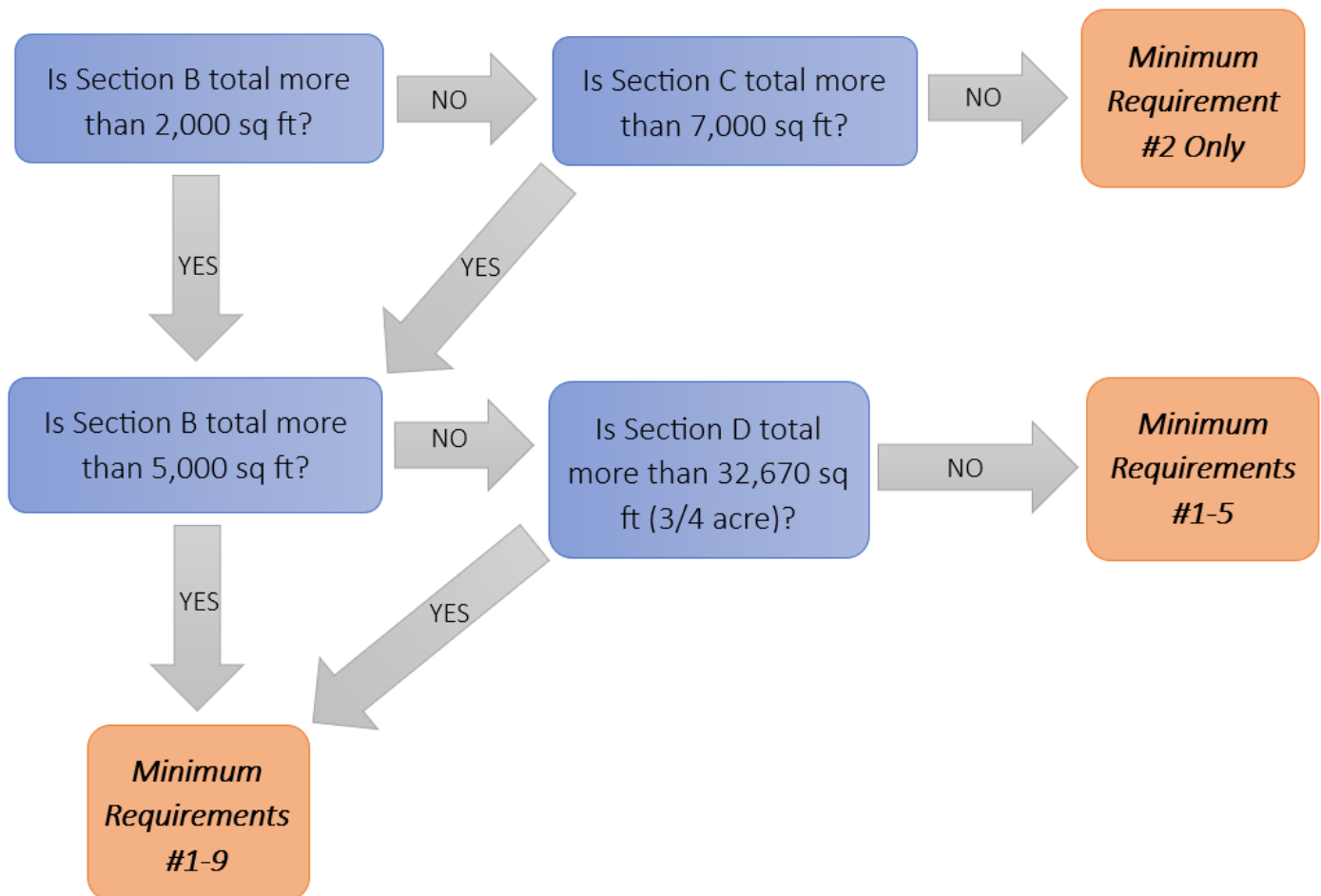
Fill in the following table to summarize the site disturbance and new or replaced hard surfaces planned for the site.

Section	Description/Surface Type	Area (sq ft)
A	Total site area (1 acre = 43,560 sf) <i>Total size of the lot/property</i>	
B	New and Replaced hard surface area <i>(See definition of hard surface and replaced hard surface on pg. 5)</i>	
	<ul style="list-style-type: none"> ▪ Roofs/Building Footprint 	
	<ul style="list-style-type: none"> ▪ Driveways/Parking Areas/Driving Surfaces 	
	<ul style="list-style-type: none"> ▪ Other (patios/covers/decks, walkways, sporting courts, pools, etc.) 	
	Total Hard Surface (Sum of Section B)	
C	Total area of land disturbing activity <i>(See definition of land disturbing activity on pg. 5)</i>	
D	Vegetation (including pasture) converted to lawn/landscape	

SUBMIT THIS PAGE WITH YOUR PERMIT APPLICATION

Minimum Requirement Determination (For New Development Projects)

Using the Project Impacts Table on page 1, follow the flow chart below to determine the **Minimum Requirements that must be met for your project**. The following page contains submittal checklists for each level of requirements outlined below.



Based on the Minimum Requirements that must be met as determined by the flow chart above, see the checklist on the following page for all documentation required for your permit submittal.

All minimum requirements shown above are based on the 2019 Stormwater Management Manual for Western Washington (SWMMWW) as published by the Washington State Department of Ecology for New Development. Projects that have over 35% existing hard surface coverage are considered Redevelopment projects and will be reviewed accordingly per SWMMWW Figure I-3.2: Flow Chart for Determining Requirements for Redevelopment. Redevelopment project requirements will be reviewed at time of submittal, or in the Pre-Application conference if applicable.

The SWMMWW can be found here: [Dept. of Ecology SWMMWW](#)

Permit Submittal Requirements

The following checklists identify minimum stormwater-specific documentation that must be included in your permit submittal based on your specific project. Some projects may require additional documentation to be provided during the review period based on the site-specific conditions. Submittals with incomplete documents will be returned to the applicant for corrections. **Please refer to the checklist below based on the Minimum Requirements determined via the flow chart on Page 2.**

Many documents referenced below are available on the [City of Vancouver Surface Water/Stormwater Requirements webpage](#).

For additional stormwater specific document inquiries or requests, please contact surfacewater@cityofvancouver.us.

Minimum requirement standards used to develop the following checklists are on the next page.

Minimum Requirement #2 Only Checklist

- Page 1 of this form
- Stormwater, Erosion and Sediment Control Plan
 - The City of Vancouver requires that all new hard surface areas are infiltrated on-site where feasible. Storm Plans must show any new or existing stormwater management or conveyance on site.
 - Erosion and Sediment Control BMP's must be identified in plans per Standard Details E-0.20a & E-0.20b
- Small Project Erosion Prevention Details (E-0.20a & E-0.20b)

Minimum Requirements #1-5 Checklist

- Page 1 of this form
- Minor Project Narrative or equivalent Storm Report
- Stormwater Plan (Instructions in Minor Project Narrative pg. 3)
- Abbreviated Construction Stormwater Pollution Prevention Plan (SWPPP)
- Erosion and Sediment Control Plan (Instructions in Abbreviated SWPPP pg. 3-4)
- General Erosion Prevention and Sediment Control Notes (Details E-1.00a & E-1.00b)
- Project Specific Erosion and Sediment Control Details
 - *Attach City details as required by Abbreviated SWPPP and Erosion Control Plan

Minimum Requirements #1-9

Full Civil Engineering Plans and a Stormwater Report certified by a licensed professional must be submitted for review. Refer to the City of Vancouver Surface Water General Requirements for further information on Stormwater specific items. Contact the Permit Desk at CityCDDEng@cityofvancouver.us for Civil Plan submittal requirements and general permit application information.

Minimum Requirement Standards

Minimum Requirement #1: Preparation of a Stormwater Site Plan

All projects shall prepare and submit a Stormwater Site Plan for review. The site plan will demonstrate how the project will comply with the [City of Vancouver Surface Water General Requirements](#) and the [Dept. of Ecology SWMMWW](#) for control of stormwater. A Stormwater Site Plan shall display site-appropriate development principles to retain native vegetation and minimize impervious surfaces to the extent feasible. The site plan will be reviewed for compliance and to ensure that stormwater best management practices (BMPs) are sufficient.

Minimum Requirement #2: Erosion and Sediment Control during Construction

All construction projects are responsible for preventing erosion and the discharge of sediment and other pollutants from the site during construction. Instructions for documenting and complying with erosion and sediment control requirements are given in the [Abbreviated Construction Stormwater Pollution Prevention Plan \(SWPPP\)](#).

*Projects proposing **less than 2,000 sq. ft** of added/replaced hard surface must include and upload City of Vancouver Small Project Erosion Prevention Details E-0.20a & E-0.20b, and site specific Erosion and Sedimentation Control Plan in lieu of an abbreviated Construction SWPPP.

Minimum Requirement #3: Source Control of Pollution

Development and redevelopment projects must use source control BMPs to prevent contamination of stormwater. Source control BMPs must be selected and designed in accordance with the [Dept. of Ecology SWMMWW](#).

Minimum Requirement #4: Preserve Natural Drainage Systems and Outfalls

Natural drainage patterns shall be maintained, and discharges from the project site shall occur at the natural location, to the maximum extent practicable. How runoff is discharged from the project site must not cause significant adverse impacts to downstream receiving waters and downgradient properties. All outfalls require energy dissipation. No new development, redevelopment, or drainage project is allowed to significantly increase or concentrate stormwater runoff onto an adjacent property or block existing drainage from adjacent lots.

Minimum Requirement #5: On-site Stormwater Management

Projects must use On-site Stormwater Management BMPs to disperse, infiltrate, and retain stormwater runoff from the site's roofs, driveways, parking areas, patios, and landscaped areas to the extent feasible without causing flooding or erosion impacts.

Minimum Requirements #6 through #9

Please see the City of Vancouver Surface Water General Requirements and the [Dept. of Ecology SWMMWW](#) for these requirements.

Definitions

Hard Surface: An impervious surface (see definition below), a permeable pavement, or a vegetated roof.

Replaced Hard Surface: For structures, the removal and replacement of hard surfaces down to the foundation. For other hard surfaces, the removal down to bare soil or base course and replacement.

Impervious Surface: A non-vegetated surface area that either prevents or slows the release of water soaking into the soil as it would under natural conditions before development, and/or a non-vegetated surface area that causes water to run off the surface in greater quantities or at an increased rate of flow than it would under natural conditions before development. Common impervious surfaces include but are not limited to, rooftops, walkways, patios, driveways, parking lots or storage areas, concrete or asphalt paving, gravel roads, and gravel parking lots. All these listed changes to the surface have impacts on the natural infiltration of stormwater. Open, uncovered retention/detention facilities shall not be considered impervious surfaces to determine whether the thresholds for application of minimum requirements are exceeded. Open, uncovered retention/detention facilities shall be considered impervious surfaces for purposes of runoff modeling.

Land Disturbing Activity: Any activity that results in the movement of the earth's surfaces or a change in the existing soil cover (both vegetative and nonvegetative) and/or existing soil topography. Land-disturbing activities include but are not limited to, demolition, reconstruction, construction, clearing, grading, filling excavation, and related activities. Compaction that is associated with the stabilization of structures and road construction shall also be considered a land-disturbing activity. Vegetation maintenance practices are not considered land-disturbing activity.